



TRIPURA STATE ELECTRICITY CORPORATION LIMITED

(A Govt. of Tripura Enterprise)

MEMO No AGM (DP&C)/2021-22

Dated:- 20.07.2021

MEMORANDUM

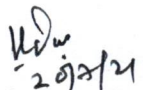
Subject: - Adoption of Cost Schedule-2021 under TSECL.

The Board of Directors of TSECL in their 92nd meeting held of 11th June, 2021 have approved the **Cost Schedule-2021 under TSECL** for materials to be use up to including 33KV overhead and underground lines, Sub-Stations. This will be implemented with immediate effect for **framing of estimates under TSECL**. The prevailing Store Issue Rates 2020-21 stands cancelled on implementation of Cost Schedule-2021.

Each items rates per unit under Cost Schedules-2021 are inclusive of GST (As applicable under Tripura State Goods and Service Tax-2017).

All concerned are hereby requested to **download the scan copy** of Cost Schedule-2021 under TSECL from website www.tsecl.in and follow the same while preparing estimates, DPR etc for works being executed by TSECL.

Enclosed:- **COST SCHEDULE-2021.**


Addl. General Manager (DP&C)
Corporate Office, TSECL
Banamalipur, Agartala

Copy To:-

No. F.AGM(DP&C)/TSECL/2020-21/544-93

Dated:- 20.07.2021

1-10). The Add. General Managers EC-I & II Agartala / Kumarghat / Dharmanagar / Ambassa / Belonia / Khowai / Gomati / Sepahijala/ EC-Transmission




TRIPURA STATE ELECTRICITY CORPORATION LIMITED
(A Govt. of Tripura Enterprise)

11-40). The Deputy General Manager, Electrical Division No.I, Agartala/ Electrical Division No.-II, Agartala / Capital Complex Electrical Division, / Dharmanagar Electrical Division/ Kanchanpur Electrical Division/Kumarghat Electrical Division / Kailasahar Electrical Division / Ambassa Electrical Division / Manu Electrical Division, / Udaipur Electrical Division, / Amarpur Electrical Division/ Belonia Electrical Division, /Sabroom Electrical Division, / Santirbazar Electrical Division /Bishalgarh Electrical Division/Jampuijala Electrical Division /Rabindranagar Electrical Division /Khowai Electrical Division/ Teliamura Electrical Division/Jirania Electrical Division / Mohanpur Electrical Division/ Transmission Electrical Division, Agartala / Transmission Electrical Division, Kumarghat / Transmission Electrical Division, Udaipur / Testing & Communication Division, Agartala/ Gumti Elect. Division, Jatanbari./ GTED-Baramura / GTED-Rokhia/ Material Management Division/ DGM (Project) Corporate Office, Agartala for information and necessary action. **They are also requested to circulate the same among the offices under their jurisdiction for information and necessary action.**

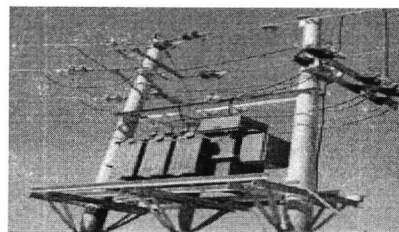
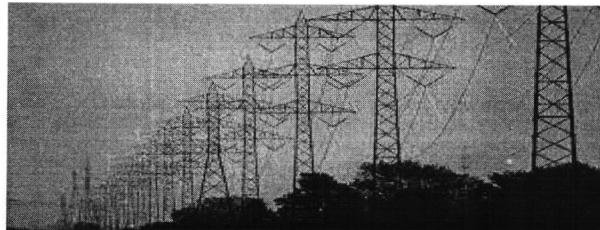
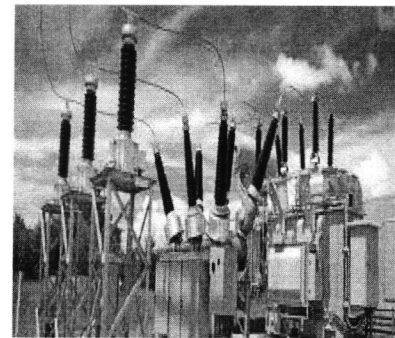
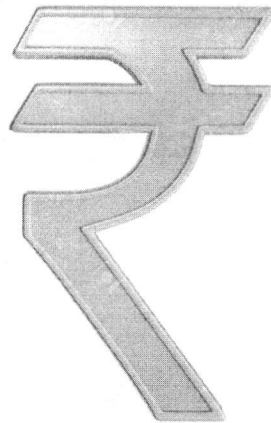
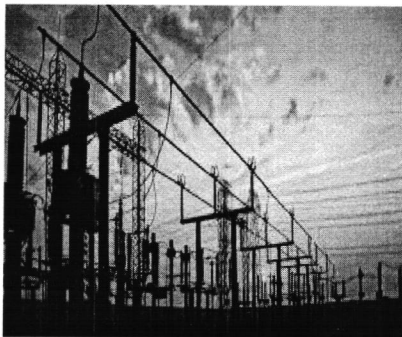
Copy for information to :-

1. PS to MD, TSECL, Corporate office, Agartala for kind info.
2. The Director (Technical), TSECL, Corporate Office, Agartala for kind info.
3. The Director (Finance), TSECL, Corporate Office, Agartala for kind info.
4. The Company Secretary, TSECL, Corporate office, Agartala for kind info.
5. The Deputy General Manager (Corporate) / Smt Sima Das, DGM (Project) / Smt Sujata Sarkar DGM (Commercial) Corporate office.
- 5.The Project Manager (IT), Corporate office. He is instructed to upload the COST SCHEDULE-2021 in TSECL website www.tsecl.in.


Addl. General Manager (DP&C)
Corporate Office, TSECL
Banamalipur, Agartala

TRIPURA STATE ELECTRICITY CORPORATION LIMITED

(A Govt. of Tripura Enterprise)



COST SCHEDULE-2021, TSECL

**Material Management Division
Office of the Deputy General Manager**

CORPORATE OFFICE, NORTH BANAMALIPUR, AGARTALA, TRIPURA

SI No	Description	Unit
Cost Schedule -2021 under TSECL		
INDEX		
SI No	Particulars	Page No
1	Different sizes of Distribution Transformer (BIS-Level-II)	1
2	Different sizes MS Channel and MS Angle	
3	Different sizes Steel Tubular Pole	
4	Different sizes ACSR	
5	Different sizes POWER TRANSFORMER	
6	Different sizes G.I WIRE	
7	Different sizes STAY SET	
8	Different sizes G.I.STAY WIRE	
9	Different sizes G.I PIN	2
10	Different sizes LT INSULATOR	
11	Different sizes 11 KV Insulators	
12	Different sizes Nuts & Bolts	
13	Different sizes Lighting Arrestor	
14	Different sizes 11 KV Grade 3Core XLPE Cable	
15	AB CABLE ACCESSORIES (LT)	2 & 3
16	AB CABLE ACCESSORIES (HT)	3
17	CUT OUT (FUSE UNIT)	3 & 4
18	Different sizes of PVC CABLE (Single Core)	4
19	Different sizes of GI Flat	
20	P G CLAMP for different conductors	
21	11KV GOS & DOF	
22	11 KV Fittings	
23	Danger Plate	
24	GOS Accessories	
25	Different Sizes of Bimetalic Lugs	
26	Different sizes of Fuse Element 11KV	4 & 5
27	Different sizes of LT Fuse wire	5
28	Different types of Tool & Plants	5 & 6
29	11KV Breaker	
30	Different sizes of 11 KV Jointing Kit (Indoor & Outdoor)	6
31	Different sizes of LT AB Cable	
32	Different sizes of 11 KV Cable	
33	11KV Covered Conductor (70 SQMM)	
34	11KV Auto Reclosure	
35	11 KV sectionalizer	
36	Fault Passage Indicator	
37	11KV Non Communicable Fault inicator (set of Three)	
38	Different types ov 11 Different sizes of 11 KV Breaker accessories	6 & 7
39	Different sizes of Galvanised Pole	

LA  

SI No	Description	Unit
40	Different sizes of Galvanised Steel	7
41	Different sizes of 33 KV Insulators	
42	Different sizes of 33KV XLPE Cable	
43	Covered Conductor	
44	33KV Circuit Breaker	
45	33KV Auto Reclosure	
46	Different category of Battery Charger	
47	Different capacities of 33 KV CT's & PT's	8
48	Different sizes of Control cables	
49	Different types of of 33KV Isolator	
50	GI Earth Spike	
51	Aluminium Pipe 60 mm Dia	
52	Different sizes of 33 KV Cable Kits	8 & 9
53	Different sizes of 33 KV GOS / DOF	9
54	11 KV sub-station Spare Parts	9 & 10
55	DT Energy Meter & FEEDER METER	
56	FEEDER METER	
57	1-Phase Static with LCD Display 240V, 50 Hz KHW Meter for LT Supply	
58	3-Phase Static with LCD Display 415V, 50 Hz KHW Meter for LT Supply	10
59	SMART Meter	
60	PCC Pole	
61	LT	
62	LT-PVC Cable 2-Core	
63	LT-PVC Cable 4-Core	
64	Transformer Oil	

sa *049*

Cost Schedule -2021 under TSECL

SI No	Description	Unit	Rate per unit
	Distribution Transformer (BIS-Level-II)		
1	DTR 10 KVA 11/0.240 KV	NO	34187.5
2	DTR 16 KVA 11/0.240 KV Single	NO	34187.50
3	DTR 16 KVA 11/0.433 KV	NO	45987.50
4	DTR 25 KVA 11/0.433 KV	NO	52340.00
5	DTR 63 KVA 11/0.433 KV	NO	109740.00
6	DTR 100 KVA 11/0.433 KV (AI)	NO	134614.29
7	DTR 200 KVA 11/0.433 KV	NO	245310.00
8	DTR 315 KVA 11/0.433 KV(O/D)	NO	485000.00
9	DTR 500 KVA 11/0.433 KV(O/D)	NO	627500.00
10	DTR 1000 KVA 11/0.433 KV(O/D)	NO	1056572.00
	MS Channel and MS Angle		
11	MS Channel100x50x6mm	MT	56400.00
12	MS Channel 75x40x6 mm	MT	56400.00
13	MS Angle 50x50x6 mm	MT	55810.00
14	MS Angle 65x65x6 mm	MT	55810.00
	Steel Tubular Pole		
15	Steel tubular pole 8m long (SP 22)	NO	8326.00
16	Steel tubular pole 9m long (SP 30)	NO	10854.22
17	Steel tubular pole 11m long (SP 54)	NO	13077.05
	ACSR different sizes		
18	ACSR Weasel (30 sq mm) Conductor	KM	22652.50
19	ACSR Rabbit (50 sq mm) Conductor	KM	35102.65
20	ACSR Dog (100 sq mm) Conductor	KM	63794.12
21	ACSR Panther conductor	KM	144541.17
	POWER TRANSFORMER		
22	1.6 MVA 33/11KV Power Transformer	NO	1625000.00
23	3.15 MVA 33/11KV Power Transformer	NO	3810000.00
24	5 MVA 33/11KV Power Transformer	NO	3690000.00
25	10 MVA 33/11KV Power Transformer	NO	5460000.00
	G.I WIRE		
26	G.I Wire 3.15 mm (10 SWG)	MT	65250.00
27	G.I Wire 4 mm (8 SWG)	MT	65250.00
28	G.I Wire 5 mm (6 SWG)	MT	65250.00
	STAY SET		
29	GI Stay Set H.T 20 SQ MM	Set	1139.43
30	GI Stay Set L.T 16 SQ MM	Set	480.08
31	MS Stay Set	Set	841.81
	G.I.STAY WIRE		
32	G.I Stay wire 7/4 mm	MT	86490.00
33	G.I Stay wire 7/3.15 mm (10 SWG)	MT	86490.00
34	G.I Stay wire 7/2.5 mm	MT	84370.00

SI No	Description	Unit	Rate per unit
35	G.I Stay wire 3/12 SWG	MT	86490.00
	G.I PIN		
36	33 KV G.I Pin	NO	185.33
37	11 KV G.I Pin	NO	77.75
	INSULATOR		
38	LT Shackle Insulator (3x 3.5)"	NO	13.75
39	LT Shackle Insulator (4x 4.5)"	NO	27.49
	11 KV Insulators		
45	11KV 70 KN Disk Insulator	NO	260.10
46	11 KV 120 KN Disk Insulator	NO	431.20
47	11 KV 45 KN Disk Insulator	NO	242.40
48	11KV Post Insulator(Porcelain)	NO	189.30
49	11KV Post Insulator(Polymeric)	NO	192.28
50	11KV 320 mm CD Polymer composite Pin Insulator	NO	149.80
51	11KV Polymer composite 45 KN Disc Insulator	NO	145.14
52	11 KV Stay/ Guy Insulator (Porcelain)	NO	27.00
	Nuts & Bolts		
53	Straps wih N/B	Pair	30.82
54	16 x 50 mm N/B	MT	63644.00
55	16 x 75 mm N/B	MT	63644.00
56	16 x 90 mm N/B	MT	63644.00
57	16 x 140 mm N/B	MT	63644.00
58	12 X 250 mm N/B	MT	71150.00
59	12 X300 mm N/B	MT	71150.00
	Lighting Arrestor		
60	11 KV Polimeric LA(9 KV, 5 KA)	NO	459.02
61	33 KV Polimeric LA(30 KV, 10 KA)	NO	4389.06
	11 KV Grade 3Core XLPE Cable		
62	Cable (XLPE 11KV) 3Cx50 sq mm	KM	411210.00
63	Cable (XLPE 11KV) 3Cx70 sq mm	KM	433000.00
64	Cable (XLPE 11KV) 3Cx95 sq mm	KM	674350.00
65	Cable (XLPE 11KV) 3Cx120 sq mm	KM	647666.67
66	Cable (XLPE 11KV) 3Cx185 sq mm	KM	689666.67
67	Cable (XLPE 11KV) 3Cx240 sq mm	KM	1012806.67
68	Cable (XLPE 11KV) 3Cx300 sq mm	KM	1164666.67
69	Cable (XLPE 11KV) 3Cx400 sq mm	KM	1460026.67
	AB CABLE ACCESSORIES (LT)		
70	Suspension clamp Assembly with straps & buckle (25-50mm)	NO	68.10
71	Dead end clamp Assembly with straps & buckle (25-50mm)	NO	288.00
72	Service Anchor Clamp(18- 50 mm)	NO	79.90
75	Distribution Box 3 phase (25-35 mm/ 25 - 50 mm)	NO	922.40
76	Distribution Box 1 phase (25 mm/ 50 mm)	NO	922.40

Handwritten signature

Handwritten mark

SI No	Description	Unit	Rate per unit
77	Cable End Cap (25- 35mm / 50 mm)	NO	12.25
78	Cable Ties	NO	5.12
79	Eye hook (25 mm)	NO	51.30
80	Pole clamp (25 / 50 mm)	NO	218.24
81	Insulation Piercing Connector Main 16-95 sq mm and Tap 4-35(50) sqmm	NO	64.00
	AB CABLE ACCESSORIES (HT)		
82	Termination KIT O/D heat shrinkable for HT cable 1Cx95 sqmm	NO	2368.00
83	Termination KIT O/D heat shrinkable for HT cable 1Cx50 sqmm	NO	1282.38
84	Joint KIT straight through heat shrinkable for HT cable 1Cx95 sqmm	NO	2560.00
85	Joint KIT straight through heat shrinkable for HT cable 1Cx50 sqmm	NO	2560.00
86	Tee Joint for(1CX50 sqmm) AB Cable i/c PI& SA	NO	3494.40
87	Tee Joint for(1CX70 sqmm) AB Cable i/c PI& SA	NO	3494.40
88	Tee Joint Tap off from HT ABC to DTR for 1CX95sqmm	NO	4992.00
89	Ampact Connector	NO	600.60
90	Cable Tie with adjustable locking arrangement	NO	4.36
91	Eye hook for Ancho.& suspn. Clamp	NO	49.30
92	Clamp for 8m PCC Pole	NO	179.20
93	Anchor Clamp suitable for 180 sq mm messenger conductor	NO	177.50
94	Anchor Clamp suitable for 50 sq mm messenger conductor	NO	177.50
95	Crimping Tool	NO	3937.50
96	Suspension clampwith bracket for 50 sq mm messenger	NO	195.20
97	PAD connector for HT cable 1Cx95sq mm	NO	820.93
98	PAD connector for HT cable 1Cx70sq mm	NO	753.48
	CUT OUT (FUSE UNIT)		
99	Re-wirable Porcelin Cut out 16 Amp	NO	29.24
100	Re-wirable Porcelin Cut out 32 Amp	NO	59.84
101	Re-wirable Porcelin Cut out 63 Amp	NO	125.95
102	Re-wirable Porcelin Cut out 100 Amp	NO	231.95
103	Re-wirable Porcelin Cut out 200 Amp	NO	449.20
104	Re-wirable Porcelin Cut out 300 Amp	NO	821.00
105	Re-wirable Porcelin Cut out 400 Amp	NO	1188.00
106	Re-wirable Porcelin Cut out 500 Amp	NO	1566.00
	PVC CABLE		
	Single core		
107	2.5 sq mm PVC Cable	KM	8824.00
108	4 sq mm PVC Cable	KM	10647.01
109	6 sq mm PVC Cable	KM	14302.00
110	10 sq mm PVC Cable	KM	17714.30
111	16 sq mm PVC Cable	KM	22066.00
119	35 sq mm PVC Cable	KM	37000.44

SI No	Description	Unit	Rate per unit
120	70 sq mm PVC Cable	KM	75955.42
121	95 sq mm PVC Cable	KM	106443.75
122	120 sq mm PVC Cable	KM	122696.40
123	185 sq mm PVC Cable	KM	188829.00
124	240 sq mm PVC Cable	KM	240111.00
	GI Flat		
125	GI Flat 50x6 mm	KG	76.00
126	GI Flat 25x6 mm	KG	76.00
	P G CLAMP		
127	P.G. Clamp for Weasel	NO	71.50
128	P.G. Clamp for Dog	NO	210.10
	11KV GOS & DOF		
129	11KV Gang Operated Switch (Porcelain type)	Set	10024.00
130	11KV Gang Operated Switch (Polymeric type)	Set	9429.67
131	11 KV Drop out Switch (Porcelain)	Set	3450.00
132	11 KV Drop out Switch (Polymeric)	Set	3096.00
	11 KV Fittings		
133	11KV Disc Fittings (6/1/2.59 to 6/1/3.35 & 7/3.8)	Set	334.93
	Danger Plate		
134	Danger Plate (HT)	NO	62.89
135	Danger Plate (LT)	NO	22.77
	GOS Accessories		
136	Fixed Contact assembly inc. N & B	NO	503.86
137	Moving Contact Assembly inc. N & B	NO	365.80
138	Back Terminal Pad inc. N & B	NO	198.24
139	Support inc. Braided Flexible Tape	NO	101.00
140	Post Insulator inc. Cap & Pedestal	NO	335.00
141	Support for Braided Flexible Tape	NO	67.26
142	Braided Flexible Tape	NO	159.30
	Bimetallic Lugs		
143	50mm ² - 10	NO	80.88
144	70mm ² - 10	NO	104.73
145	95mm ² - 10	NO	103.52
146	120mm ² - 12	NO	155.35
147	185mm ² - 12	NO	216.90
148	240mm ² - 12	NO	320.38
149	300mm ² - 12	NO	238.09
	Fuse Element 11KV		
150	1 Amps	NO	6.67
151	3 Amps	NO	27.97
152	4 Amps	NO	30.00
153	5 Amps	NO	31.62

SI No	Description	Unit	Rate per unit
154	10 Amps	NO	31.62
155	15 Amps	NO	31.62
156	20 Amps	NO	31.62
157	25 Amps	NO	36.37
158	30 Amps	NO	36.37
	LT Fuse wire		
159	2.5 Amps	Kg	832.00
160	5 Amps	Kg	832.00
161	10 Amps	Kg	832.00
162	20 Amps	Kg	832.00
163	30 Amps	Kg	832.00
164	60 Amps	Kg	864.00
165	100 Amps	Kg	864.00
166	200 Amps	Kg	864.00
167	300 Amps	Kg	796.50
	Tool & Plants		
168	Adjustable Wrench	NO	390.40
169	Electrician Hammer	NO	204.80
170	Flat screwdriver 250mm	NO	188.16
171	Flat screwdriver 200mm	NO	270.08
172	Flat screwdriver 150mm	NO	80.64
173	Pipe Wrench	NO	855.04
174	Ring Spanner set	NO	1728.00
175	Discharge Rod	NO	1280.00
176	Megger 500VA	NO	5937.50
177	Megger 1000VA	NO	10067.50
178	Megger 5000VA	NO	12073.50
179	Hand gloves	NO	443.00
180	Earth Tester	NO	4167.50
	11KV Breaker		
181	11KV VCB Panel rated Voltage 11/12KV, Rated Current 630/800/1250 A, Nos of Pole 3 Poles, Frequency 50 Hz	Set	408500.00
	11 KV Jointing Kit		
182	11 KV cable kit for XLPE 3 core 70 sqmm indoor	NO	4262.00
183	11 KV cable kit for XLPE 3 core 70 sqmm Outdoor	NO	5619.00
184	11 KV cable kit for XLPE 3 core 95 sqmm indoor	NO	4262.00
185	11 KV cable kit for XLPE 3 core 95 sqmm Outdoor	NO	5619.00
186	11 KV cable kit for XLPE 3 core 120 sqmm indoor	NO	4512.60
187	11 KV cable kit for XLPE 3 core 120 sqmm Outdoor	NO	6377.00
188	11 KV cable kit for XLPE 3 core 150 sqmm indoor	NO	4512.60
189	11 KV cable kit for XLPE 3 core 150 sqmm Outdoor	NO	6377.00
190	11 KV cable kit for XLPE 3 core 185 sqmm indoor	NO	4512.60
191	11 KV cable kit for XLPE 3 core 185 sqmm Outdoor	NO	6377.00

SI No	Description	Unit	Rate per unit
192	11 KV cable kit for XLPE 3 core 240 sqmm indoor	NO	5173.40
193	11 KV cable kit for XLPE 3 core 240sqmm Outdoor	NO	6754.60
194	11 KV cable kit for XLPE 3 core 300 sqmm indoor	NO	5173.40
195	11 KV cable kit for XLPE 3 core 300 sqmm Outdoor	NO	6754.60
196	11 KV cable kit for XLPE 3 core 400 sqmm indoor	NO	6719.20
197	11 KV cable kit for XLPE 3 core 400 sqmm Outdoor	NO	8560.00
198	11 KV Heat Shrinkable Straight Through Type XLPE 3 core 70 (Pus	NO	11934.80
199	11 KV Heat Shrinkable Straight Through Type XLPE 3 core 95 (Pus	NO	11934.80
200	11 KV Heat Shrinkable Straight Through Type XLPE 3 core 120 (Pu	NO	12996.80
201	11 KV Heat Shrinkable Straight Through Type XLPE 3 core 150 (Pu	NO	12996.80
202	15 KV Heat Shrinkable Straight Through Type XLPE 3 core 185 (Pu	NO	12996.80
203	11 KV Heat Shrinkable Straight Through Type XLPE 3 core 240 (Pu	NO	13704.80
204	11 KV Heat Shrinkable Straight Through Type XLPE 3 core 300 (Pu	NO	13704.80
205	11 KV Heat Shrinkable Straight Through Type XLPE 3 core 400 (Pu	NO	16171.00
	LT AB Cable		
206	3x25+1x16+1x25 sqmm	Km	112137.67
207	3x35+1x16+1x25 sqmm	Km	117410.00
208	1x25+1x16+1x25 sqmm	Km	79063.00
209	3x50+1x16+1x35 sqmm	Km	131828.12
210	1x50+1x16+1x35 sqmm	Km	68928.00
	11 KV Cable		
211	11 KV AB Cable 3Cx50+1Cx105 sqmm	KM	483762.84
212	11 KV AB Cable 3Cx95+1Cx180 sqmm	KM	723181.03
213	11KV Covered Conductor (70 SQMM)	KM	560000.00
214	11KV Auto Reclosure	NO	812000.00
215	11 KV sectionalizer	NO	690000.00
	12 KV Motorised Ring Main Unit self power type with CPT or by other means, Solod or SF6 Insulation Outdoor enclouser, FPI, Battery all accessories and tool as indicated		
216	3 Way RMU TYPE: SBS	No	280000.00
217	4 Way RMU TYPE: SBSS	No	380000.00
218	5 Way RMU TYPE: SBBSS	No	650000.00
219	6 Way RMU TYPE: SBBBSS	No	900000.00
220	Fault Passage Indicator		
a	Medium Voltage Overhead Line Fault Passage Indicator (FPI), 1-Phase conductor mounting type suitable for upto 36 KV, ACSR conductor as per specification (3-Units per Set)	Set	54355.00
221	11KV Non Communicable Fault inicator (set of Three)	Set	104031.00
222	Fixed contact assembly (i/c Block) for ALSTOM Make KAD-11 KV Breaker	NO	12052.20
223	Moving control For ALSTOM make KAD 11 KV Breaker	NO	5568.00
224	Arc Control Pot assembly (Including Diaphragam)	NO	4392.19

W

SI No	Description	Unit	Rate per unit
225	Backing Spring for finger contact	NO	180.48
226	33 KV Discharge Rod	NO	4397.48
	Galvanised Pole		
227	12Mtr Full Galvanised Pole	No	21865.30
228	11 Mtr Full Galvanised Pole	No	17366.56
229	9 Mtr Full Galvanised Pole	No	12171.92
230	8 Mtr Full Galvanised Pole	No	10698.56
	Galvanised Steel		
231	Channel 100x50x6mm (Galvanised)	MT	92613.40
232	Channel 75x40x6mm (Galvanised)	MT	92613.40
233	Angle 65X65X6mm (Galvanised)	MT	92318.40
234	Angle 50x50x6mm (Galvanised)	MT	92318.40
	33 KV Insulators		
40	33 KV 580mm CD Pin Insulator	NO	357.50
41	33 KV 900 mm CD Polymer Composite Pin Insulator	NO	422.60
42	33 KV Polymer Composite 70 KN Disk Insulator	NO	281.00
43	33KV Post Insulator	NO	1240.00
44	33 KV Stay Insulator	NO	35.34
	33KV XLPE Cable		
235	Cable XLPE 33 KV 1x185sqmm	KM	1311000.00
236	Cable XLPE 33 KV 1x240sqmm	KM	1059831.17
237	Cable XLPE 33 KV 1x300sqmm	KM	1246446.67
238	Cable XLPE 33 KV 1x400sqmm	KM	1013284.61
239	Cable XLPE 33 KV 1x1000sqmm	KM	2191676.07
240	Cable XLPE 33 KV 3x185sqmm	KM	2383966.70
241	Cable XLPE 33 KV 3X300sqmm	KM	2307083.65
242	Cable XLPE 33 KV 3X400sqmm	KM	2809042.00
	Covered Conductor		
243	33KV Covered conductor 100 Sqmm	KM	731000.00
	33KV Circuit Breaker		
244	33KV Breaker & VCB Panel 33/36 KV 800/1250 /2000 Amps	Set	804500.00
245	33KV Auto Reclosure	Set	1082000.00
	Battery Charger		
246	Battery Charger suitable for charging 30Volts station battery 8 Hr Back	Set	39825.00
247	Battery Charger suitable for 100AH, 110 V Battery Bank	Set	219655.66
248	Battery Charger suitable for 150AH, 110 V Battery Bank	Set	218550.00
249	Battery Charger suitable for 240AH, 110 V Battery Bank, 2.2V, 60 Nos & 5 nos Spares	Set	320443.65
250	Switchyard Support Structure (GI Lattice Structure)	Ton	121122.20
	CT & PT		
251	33KV PT 1Phase OD Type Ratio 33:V3/0.11/ v3KV	NO	37305.06

SI No	Description	Unit	Rate per unit
252	33KV CT 1Phase Dual Core bCT Ratio 100-50/ 5-5 A	NO	32071.24
253	33KV CT 1Phase Dual Core bCT Ratio 400-200/ 1-1 A	NO	38907.01
254	33KV CT 1Phase Dual Core bCT Ratio 400-200/ 1-1-1 A	NO	45751.99
255	33KV CT 1Phase Dual Core bCT Ratio 200-100/ 1-1-1 A	NO	46271.16
256	33KV CT 1Phase Dual Core bCT Ratio 200-100/ 1-1 A	NO	35472.54
257	33KV CT 1Phase Dual Core bCT Ratio 100-50/ 1-1 A	NO	31989.78
	Control cables		
258	Cable (Copper control cable 1.1 KV) 12C	KM	279210.46
259	Cable (Copper control cable 1.1 KV) 8C	KM	193396.51
260	Cable (Copper control cable 1.1 KV) 4C	KM	105600.52
261	Cable (Copper control cable 1.1 KV) 10Cx2.5 sq mm	KM	421250.00
262	Cable (Copper control cable 1.1 KV) 1Cx2.5 sq mm	KM	76050.00
263	Cable (Copper control cable 1.1 KV) 2Cx2.5 sq mm	KM	116890.00
264	Cable (Copper control cable 1.1 KV) 4Cx2.5 sq mm	KM	166450.00
265	Cable (Copper control cable 1.1 KV) 7Cx2.5 sq mm	KM	200670.00
	33KV Isolator		
266	33KV 400 TPGO Isolator (Rocking Type)	No	39140.20
267	33KV 400 CR Type Isolator W/O ES (H/L)	No	36587.78
268	33KV 400 CR Type Isolator W/O ES (L/L)	No	36182.08
269	33KV 400 CR Type Isolator with ES (H/L)	No	46071.77
270	GI Earth Spike	No	453.32
271	Aluminium Pipe 60 mm Dia	Kg	244.00
	Cable Kits		
272	33 KV cable kit for XLPE 1 core 240 sqmm indoor	NO	7335.74
273	33 KV cable kit for XLPE 1 core 240 sqmm Outdoor	NO	9615.5
274	33 KV cable kit for XLPE 1 core 300sqmm indoor	NO	8475.62
275	33 KV cable kit for XLPE 1 core 300 sqmm Outdoor	NO	10754.2
276	33 KV cable kit for XLPE 1 core 400sqmm indoor	NO	8475.62
277	33 KV cable kit for XLPE 1 core 400 sqmm Outdoor	NO	10754.20
278	33 KV cable kit for XLPE 3 core 120 (Push on Type) sqmm Indoor	NO	10011.40
279	33 KV cable kit for XLPE 3 core 120 (Push on Type) sqmm Outdoor	NO	13551.40
280	33 KV cable kit for XLPE 3 core 185 (Push on Type) sqmm Indoor	NO	10011.40
281	33 KV cable kit for XLPE 3 core 185 (Push on Type) sqmm Outdoor	NO	13551.40
282	33 KV cable kit for XLPE 3 core 240 (Push on Type) sqmm Indoor	NO	13551.40
283	33 KV cable kit for XLPE 3 core 240 (Push on Type) sqmm Outdoor	NO	15994.00

SI No	Description	Unit	Rate per unit
284	32 KV cable kit for XLPE 3 core 300 (Push on Type) sqmm Indoor	NO	13551.40
285	33 KV cable kit for XLPE 3 core 300 (Push on Type) sqmm Outdoor	NO	15994.00
286	33 KV Heat Shrinkable Straight Through Type XLPE 3 core 120 (Push on Type) sqmm Outdoor	NO	39747.40
287	33 KV Heat Shrinkable Straight Through Type XLPE 3 core 185 (Push on Type) sqmm Outdoor	NO	39747.40
288	33 KV Heat Shrinkable Straight Through Type XLPE 3 core 240 (Push on Type) sqmm Outdoor	NO	47264.00
289	33 KV Heat Shrinkable Straight Through Type XLPE 3 core 300 (Push on Type) sqmm Outdoor	NO	47264.00
	33 KV GOS / DOF		
290	33KV DO Fuse 150 Amps	Set	11677.00
291	33KV GOAB Switch 500 Amp	Set	35240.00
292	33KV GO Polymeric Type	NO	21470.00
293	33KV Post Insulator	NO	1219.52
294	GI pipe 50mm dia for 3Mtr Length	Each	2837.50
295	HDPE Pipe 110 mm outer Dia of 6Mtr Length	Each	1212.00
296	110 Volt Shunt Trip Coil for Alstrom/ GEC/ Areva Make Breaker	Each	1390.00
297	110 Volt Shunt Trip Coil for Areva Make Breaker	Each	1500.00
298	110 Volt Shunt Trip Coil for Alstrom/ GEC/ Areva Make Breaker	Each	1523.17
299	Refabricated of 11KV Moving Contract	Each	2184.00
300	Contract finger assembly	Each	2761.39
	DT Energy Meter & FEEDER METER		
	DT Energy Meter		
301	100/5 for 25 KVA DT	Each	6813.00
302	100/5 for 63 KVA DT	Each	6813.00
303	300/5 for 200 KVA DT	Each	6057.00
304	500/5 for 300 KVA DT	Each	6057.00
305	800/5 for 500 KVA DT	Each	6309.00
	FEEDER METER		
306	1 Amps	Each	3243.00
307	5 Amps	Each	3243.00
	1-Phase Static with LCD Display 240V, 50 Hz KHW Meter for LT Supply		
308	5-30Amps Prepaid Meter	Each	1681.50
309	5-30Amps	Each	712.70
	3-Phase Static with LCD Display 415V, 50 Hz KHW Meter for LT Supply		
310	10-60 Amps	Each	2938.20
311	20-100 Amps	Each	2938.20

W

SI No	Description	Unit	Rate per unit
	SMART Meter		
312	1 Phase 5-30 A	Each	5410.00
313	1 Phase 10-60 A	Each	5410.00
314	3-phase 10-60	Each	10770.00
315	3-phase 20-100	Each	10770.00
	PCC Pole		
315	8 Mtr Long PCC pole	Each	3553.00
316	9 Mtr Long PCC pole	Each	4325.00
	LT		
317	LT Spacer	Each	106.20
	LT-PVC Cable 2-Core		
318	PVC Cable 2-Core 2.5 Sq mm Alluminium	Mtr	17.52
319	PVC Cable 2-Core 4.0 Sq mm Alluminium	Mtr	22.49
320	PVC Cable 2-Core 6.0 Sq mm Alluminium	Mtr	34.54
	LT-PVC Cable 4-Core		
321	4 Core Multi Strand 6 Sq mm Aluminium PVC Cable	Mtr	43.98
322	4 Core Multi Strand 10 Sq mm Aluminium PVC Cable	Mtr	63.36
323	4 Core Multi Strand 35 Sq mm Aluminium PVC Cable	Mtr	161.80
	Transformer Oil		
324	Transformer Oil	KL	73160.00

SA → KQ